

Coach Directions to The Garden at Miserden

Miserden, Nr Stroud, Gloucestershire, GL6 7JA

Due to many narrow country lanes in the area being unsuitable for large vehicles, we strongly recommend the below route to Miserden no matter which direction you are travelling from.

Please ask your group organiser to call us on 01285 821 303 when you are 10 minutes away if you are planning to be met by Miserden staff, so we can make sure we are at the garden entrance when you arrive.

Coming from the South/Cirencester, take the A417 following signs towards Gloucester. Approximately 9 miles from Cirencester take the turning on your left signposted to the village of Birdlip.

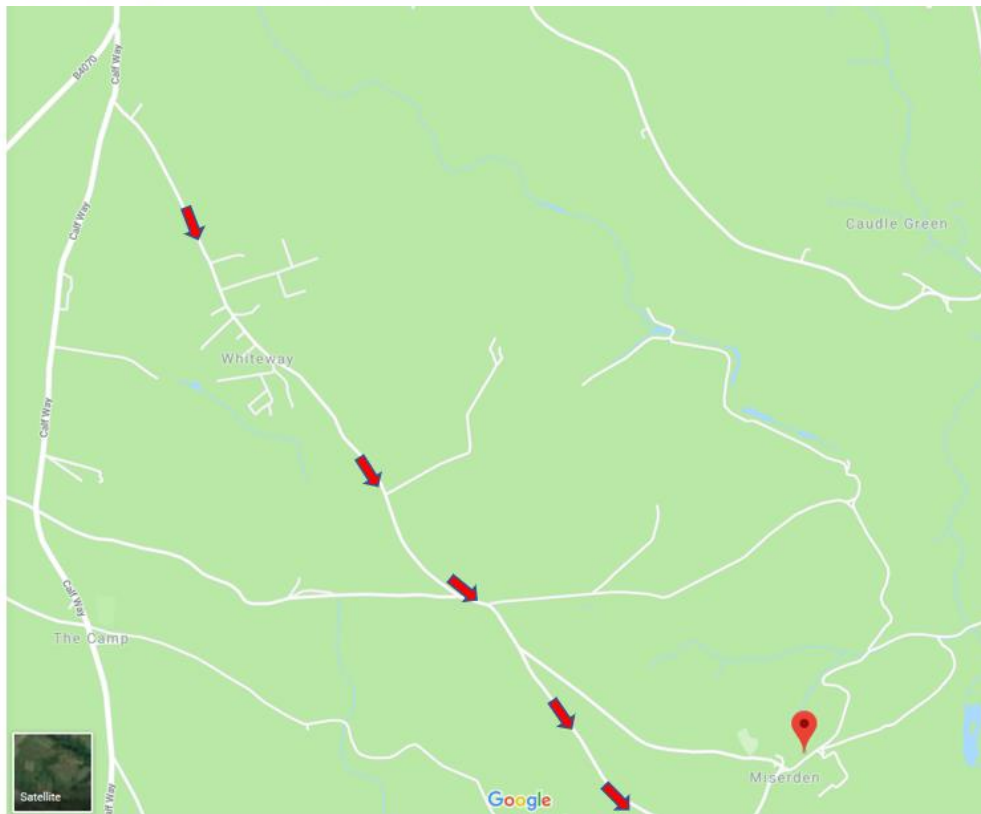
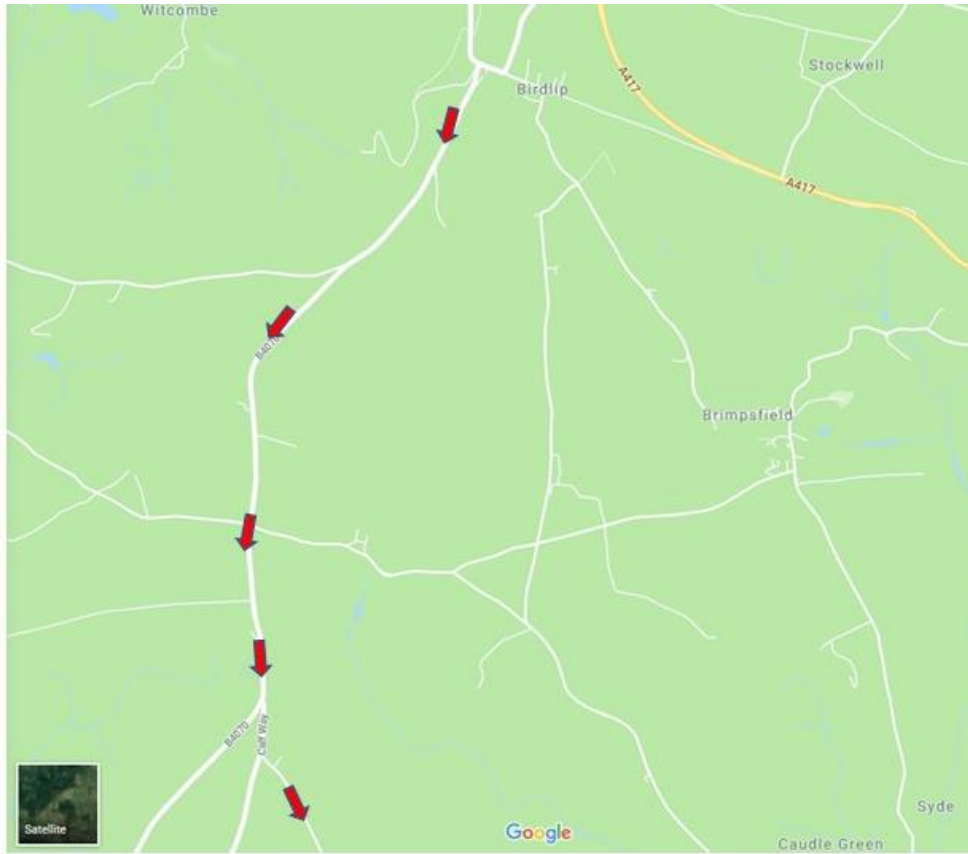
From the North/Cheltenham, take the A417 following signs towards Cirencester. After following the dual carriageway right at the Air Balloon pub roundabout and shortly after going up the hill, take the turning on the right signposted for the village of Birdlip.

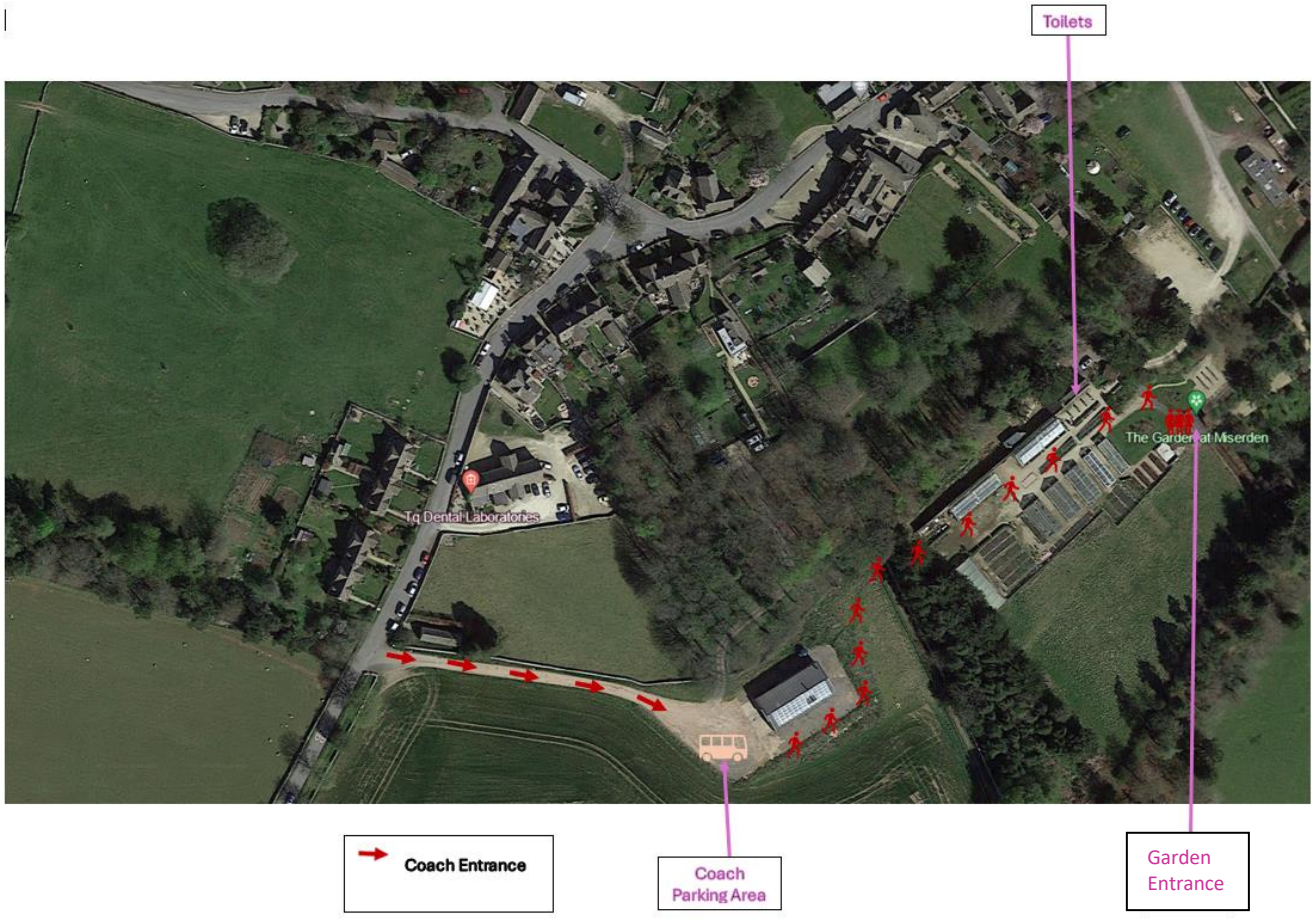
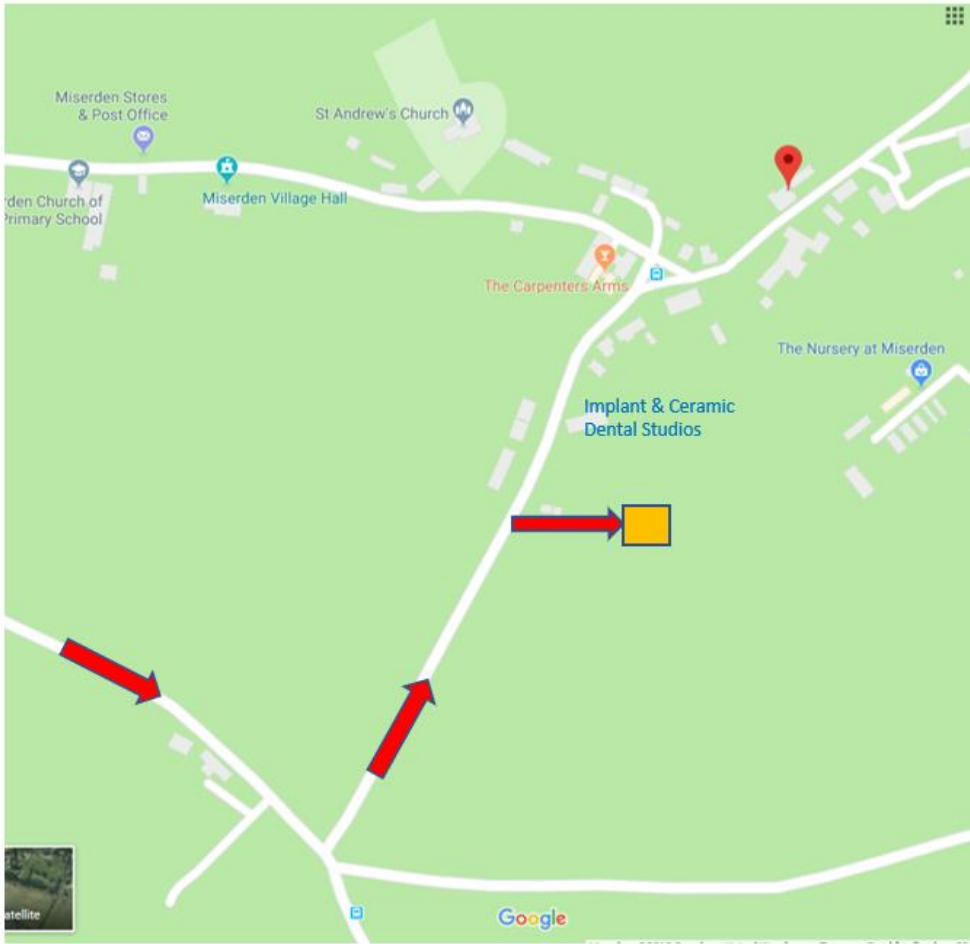
Go through the village and just before you drop down a very steep hill you will see a road, signposted on your left, for Stroud (B4070). Take this turning – a very sharp corner.

Carry along this road for about 3-4 miles, when you will see a public house called the Fostons Ash on your left. The road forks in two here; take the left hand fork and 200 yards up the road turn left, signposted to Miserden.

Follow the road through the village of Whiteway. After passing through the village stay on this road, you will pass a country lane on your left, a turning on your right and then another on your left. You will then meet a fork in the road, take the right hand side NOT that signposted to Miserden.

Take the next left signposted Miserden, then turn right into the coach parking area.





→ Coach Entrance

Coach Parking Area

Garden Entrance

Toilets